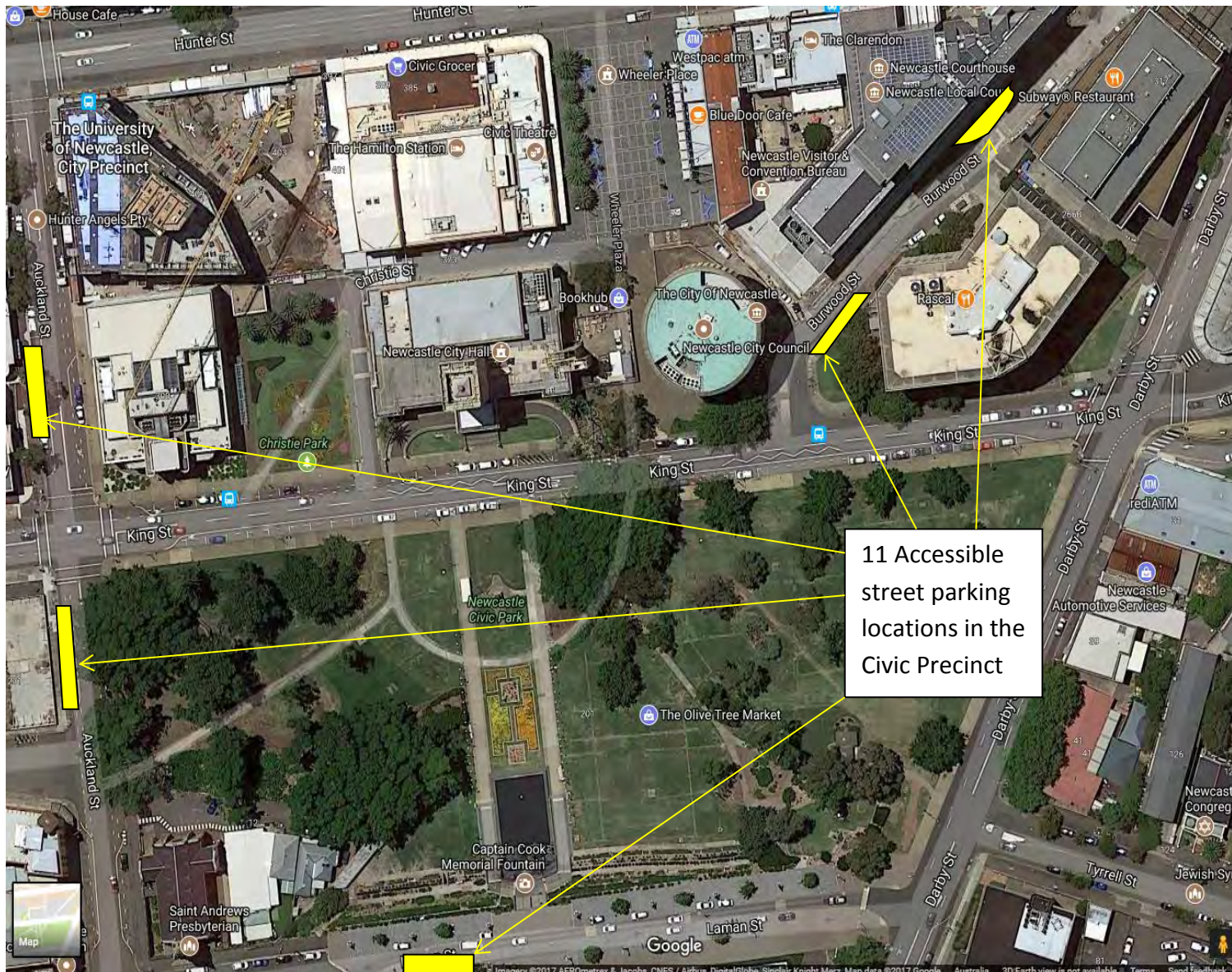


## Accessible Parking Locations in the Civic Precinct-as at September 2017



The **Mobility Parking Scheme** is managed by Roads and Maritime Services who issue a licence-style card that includes your photo and other security features to protect the integrity of the scheme.

For more information phone 132213 or visit;

<http://www.rms.nsw.gov.au/roads/using-roads/mobility-parking>

**Mobility Parking Scheme** Permit holders can park in time limited parking areas for longer time periods.

**Example:** In a timed parking area of

**More than 30 minutes:**

- the vehicle can park for an unlimited time

**30 minute parking:**

- the vehicle can park for up to 2 hours

**Less than 30 minute parking:**

- the vehicle can park for a maximum of 30 minutes

Newcastle City Council is currently in the process of delivering a city wide map of accessible parking spaces that will soon appear on our website, if you would like to be notified when this is publically available or require information in an alternative format, please contact our Community Development Facilitator on 49742855 or email [swarham@ncc.nsw.gov.au](mailto:swarham@ncc.nsw.gov.au)





**Left:**  
Auckland St,  
Accessible  
spaces with  
kerb ramps



**Above:** Auckland St,  
between King & Hunter St  
2 spaces

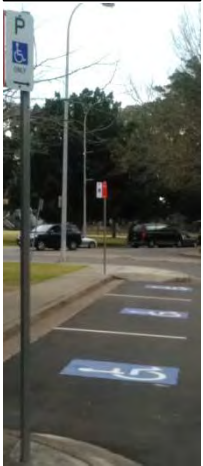
**Below:** Auckland St, between King &  
Gibson  
2 spaces



# Need a parking space that is accessible in the Civic Precinct?

- Your destination is \_\_\_\_\_
- Civic Theatre
  - Civic Play House
  - Town Hall
  - Newcastle Library
  - Newcastle Regional Art Gallery
  - New Space (University)
  - Watt Space

Here are 11 suggestions within 200 metres of Town Hall which may assist your destination parking



**Above:** Burwood St, eastern side of court house building, 2 spaces, includes option to park to align passenger or driver side, see below kerb ramp, same location



**Right:**  
Laman St, 2 spaces

**Left:**  
Burwood St, western side of Tax Office  
3 spaces

