

LEGEND

Extent of Local Centre Zoning

Proposed kerb alignment

Removed kerb

No stopping

Realigned driveway

Accessible carparking

Existing powerpole and lines.

New Bus Shelter

Existing Tree

Turf

Mass Planting

Proposed Small-Medium Tree

Proposed Large Street Tree

Street Furniture including Seats, Bike Rack and Garbage Bins.

Custom interpretive Fence.To prevent crossing at threshold.

Raised Pedestrian Crossing

Kerb Ramps

Speed Cushion To Slow Traffic Speed

Existing Concrete Path

New Concrete Path

Raised Threshold

Bus Stop

Food/Drink Outlet

Outdoor Dining/Retail Space

Restricted Vehicular Movement left in/out only.

CARPARKING NUMBERS	
ADDITIONAL PARKING SPACES	12
LOST PARKING SPACES	11
NET	1

Note: The new kerb extensions at intersections shortens available parking spaces. Only entire spaces are denoted in the table.

1. A 40km zone with associated traffic calming devices is proposed for the Local Centre. All existing car parking arrangements are retained unless shown on the plan.

2. The location of street furniture including seating, bins and lights will be considered at the detail design stage.

3. This is a concept plan for the communication of proposals - not a detailed civil design. In some instances the final layout may vary to accommodate underground infrastructure and technical requirements.

DESIGN PROPOSAL

1

Large feature trees and mass planting to define entry to town centre.

2

Speed cushions to reduce traffic speeds.

3

Speed cushions and road narrowing to define entry to 40km/hr zone.

4

Narrow Landor Street intersection to reduce speed.

5

Kerb extension to narrow crossing distance.

6

Raised pedestrian crossing with kerb extension to improve pedestrian access. Lighting upgrade.

7

Raised threshold with kerb build-outs to define entry to 40km/hr zone.

8

Future upgrade of footpath to 2.7m Shared Path.

9

Possible location for future playground.

10

Possible relocation of public toilets.

11

Existing pedestrian crossing to be relocated.

12

Restricted vehicular movement at Railway Pde. Left in and Left out only.

13

Retain bus-stop for use during track work.

14

Apex Park Renewal works as part of future project to create a 'Village Lawn' for community events.

15

Pedestrian scale lighting upgrade.

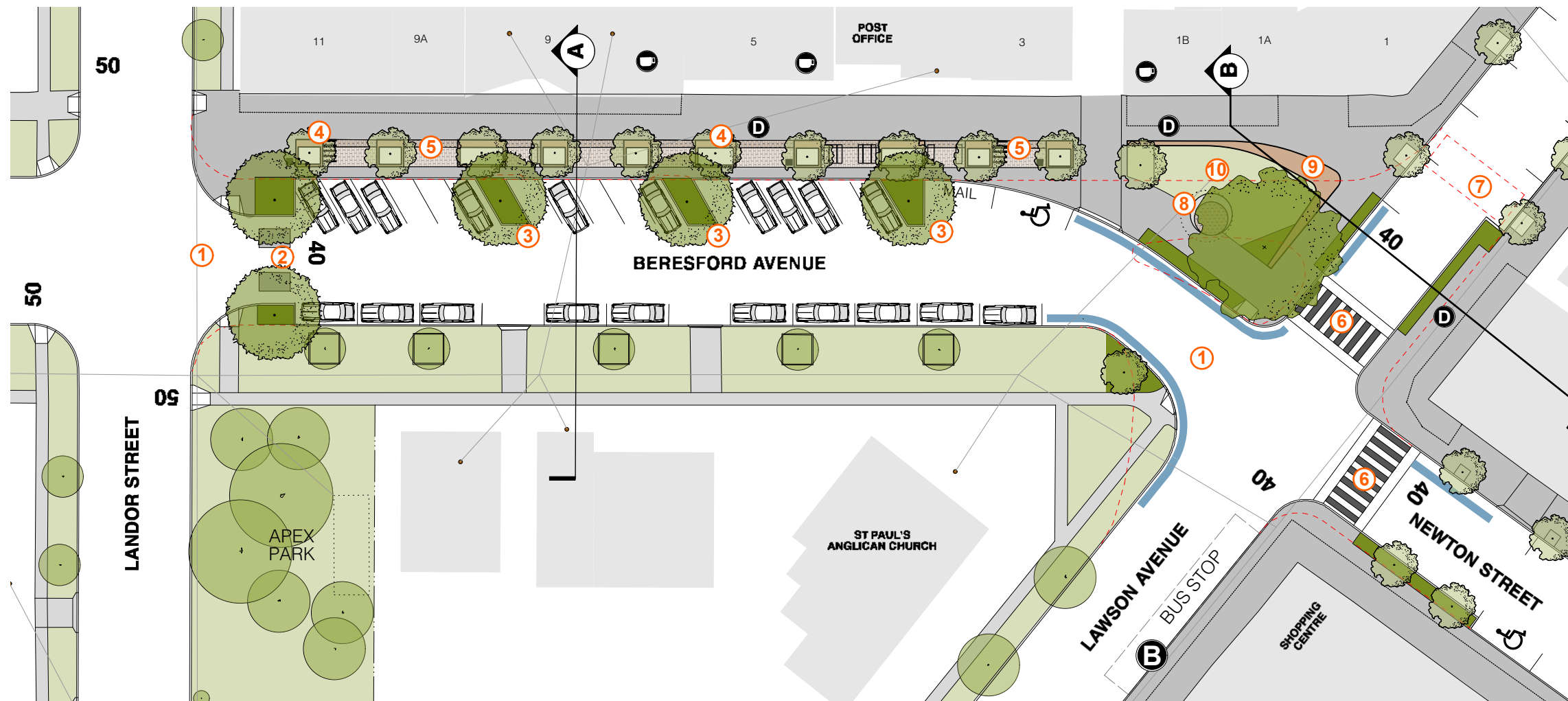
Beresfield Public Domain Plan and Traffic Plan

2nd February 2017

north

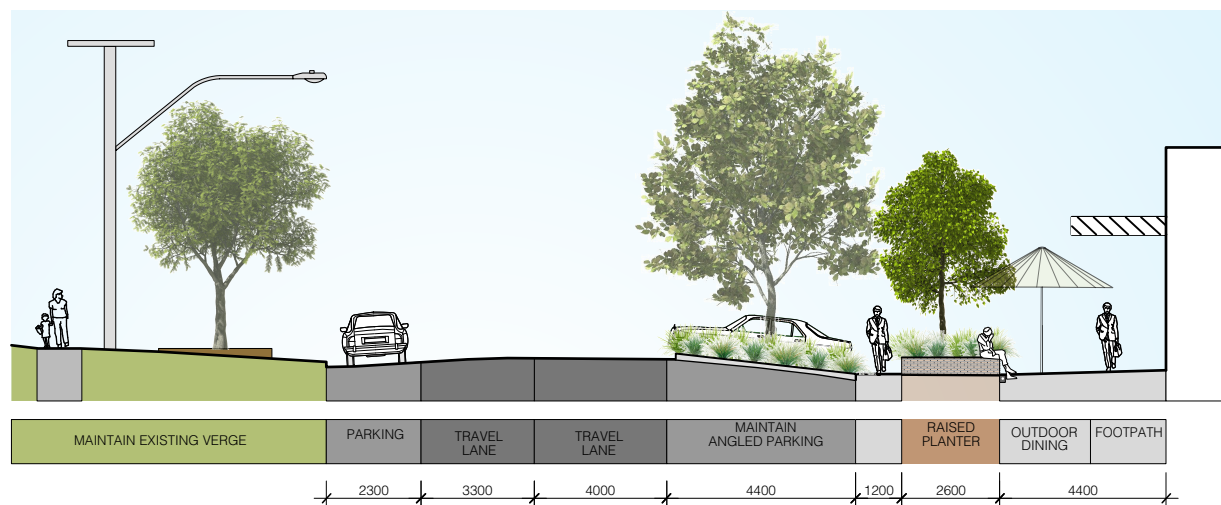
The City of Newcastle

PO Box 489 Hunter Region Mail Centre Newcastle 2300

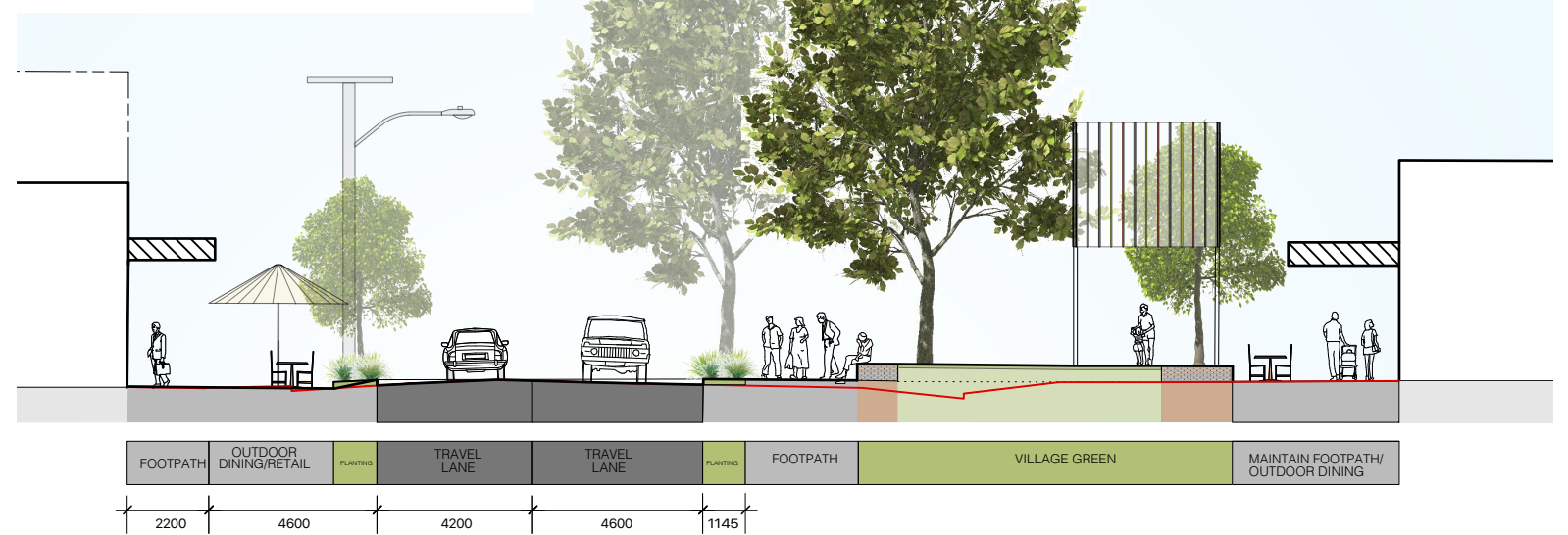


DETAIL PLAN

- ① Kerb widening to reduce crossing distance.
- ② Speed cushions to define entry to 40km/hr zone.
- ③ Inroad large street tree planting to provide shaded spaces.
- ④ Raised brick planters with new shade trees.
- ⑤ Porous paving between planters with tables and bench seats.
- ⑥ Raised pedestrian crossing with kerb extension to improve pedestrian access.
- ⑦ Relocated pedestrian crossing to improve access and increase parking.
- ⑧ Public art or interpretive element.
- ⑨ Informal seating wall.
- ⑩ 'Village Green' with large feature tree to provide a focal point and shade.



BERESFORD AVENUE SECTION A



LAWSON AVENUE SECTION B

Beresfield Public Domain Plan and Traffic Plan

2nd February 2017



The City of
Newcastle

PO Box 489 Hunter Region Mail Centre Newcastle 2300