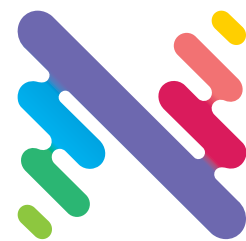


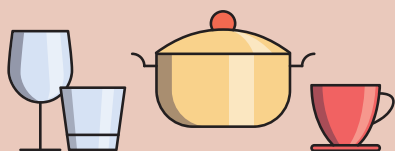
Kerbside Bin Service



City of
Newcastle

Your red lid bin is collected on the same day every week, with your yellow lid and green lid bins collected on alternating weeks.

General Waste (red lid)



Crockery and toughened glass
(kitchen glassware, Pyrex, mirror
and window glass)



Food and kitchen
scraps



Polystyrene/
foam



Nappies and
sanitary products



Soft plastics and
foil packets



Clothing, shoes, linen and toys



Recycling (yellow lid)



Hard plastic containers



Glass bottles and jars
(lids unscrewed)

Aluminium
and steel containers



Paper and cardboard (flatten boxes)



Garden Organics (green lid)



Garden prunings,
leaves and bark



Grass clippings
and weeds



Small branches and twigs



Be waste wise

- ✓ Place garden organics and recyclables **loosely** in your green lid and yellow lid bins – **don't bag them**.
- ✓ Donate or sell items, such as clothing, kitchenware and toys, that are in good, usable condition.
- ✓ Clean, soft plastic packaging can be recycled at many supermarkets or through the Sort & Save service at Summerhill Waste Management Centre.



Not sure where to put something?

Visit newcastle.nsw.gov.au or call 4974 2000.

Get it right on bin night

Using and placing your bins correctly will help ensure that our collection trucks can service them

Don't place bins under low-hanging power lines or trees

Our trucks need to lift your bins up high to tip them

Try to space bins one metre apart

This helps our truck's lifting arm to reach your bins

1m

Place bins away from parked cars

Place bins away from poles

05:00

Put bins on kerb by 5am on your collection day



Don't overload. Our trucks can't lift bins that are too heavy



Don't contaminate. Only put accepted wastes in each bin



Don't cram. Your bin won't empty if it's packed too tightly

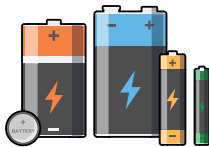
If your bin has not been emptied by 4pm on your collection day, please let us know. See below for contact details.

Keep these items out of your bins

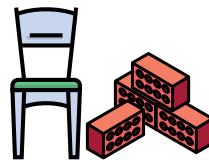
Some things don't belong in your kerbside bins. Batteries and chemicals can start fires inside our collection trucks. Syringes and other medical wastes can harm or injure staff at our sorting and processing facilities. Electronic waste and chemicals—such as paint, coolant and poisons—can harm human health and the environment if not disposed of responsibly. And building wastes, such as bricks and concrete, can make your bin too heavy for our trucks' arms to lift—or cause considerable damage if they do find their way inside our vehicles.



✗ Chemicals



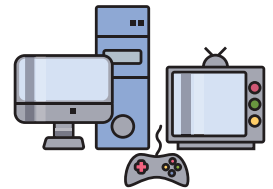
✗ Batteries



✗ Heavy/bulky items



✗ Medical waste



✗ Electronic waste

Free services are available to Newcastle residents for the collection or drop-off of many of these problem wastes. Please call us or visit our website for disposal options.

Contact us

To report a missed service, damaged or missing bin

Please wait until 4pm to report a missed collection, unless all other households in your street appear to have had that particular bin serviced.

Web	newcastle.nsw.gov.au/collections
App	City of Newcastle App Available to download via the Apple Store and Google Play—search 'City of Newcastle'
Phone	<ul style="list-style-type: none">For red lid bins, call 4974 2000For green lid bins, call 4974 2000For yellow lid bins, call 4947 8511



Need more space?

Did you know you can upsize your recycling bin for a small one-off fee? You can also swap your general waste bin for a larger one, or request extra bins for any kerbside service (annual fees apply).



For general enquiries, call **4974 2000** 8am–5pm Monday–Friday (excl. public holidays) or visit newcastle.nsw.gov.au