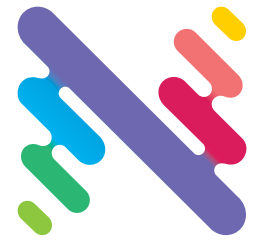


# Sort & Save



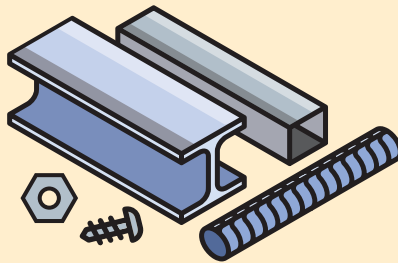
City of  
Newcastle

Sort your waste before you go to Summerhill Waste Management Centre to recycle these items at no charge.\*



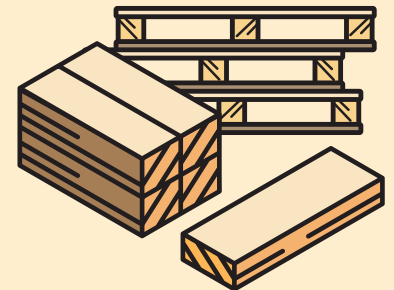
## CARDBOARD

Clean, dry, flattened cardboard. No waxed cardboard. No packaging material (e.g. polystyrene foam, beads, plastic wrap/straps) or excessive tape.



## SCRAP METAL

Including BBQs, bikes, car parts, hot water heaters and white goods. Fees apply for fridges, freezers and air-conditioners.



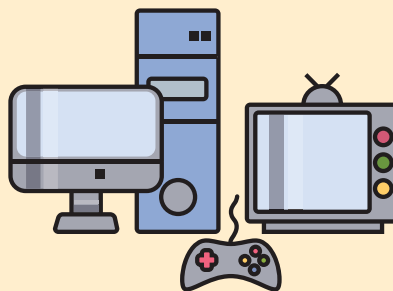
## CLEAN WOOD

Dry, solid timber - including pallets, crates and offcuts - that has not been painted, stained or treated. See overleaf for details.



## SOFT PLASTICS

Including clean plastic bags, packaging, mail satchels and bubble wrap. No food waste, strapping or tape.



## E-WASTE

Electrical waste items such as small appliances, computers, TVs and electric tools. Maximum 10 items per visit.



## RECYCLABLE CONTAINERS

Glass bottles and jars, aluminium and steel cans, plastic bottles and containers.

\*Newcastle residents only. Please see terms and conditions overleaf.

✓ save money ✓ save time ✓ save the environment

For details, visit [newcastle.nsw.gov.au/sort-and-save](http://newcastle.nsw.gov.au/sort-and-save) or call 4974 2000.



**Save money, save time,  
save the environment:  
sort these waste items  
before visiting Summerhill.**

## How do I sort my items?

Sorting means separating items into 'like' groups in your car, ute or trailer (e.g. putting scrap metal in a separate pile to cardboard), rather than having them combined.

## What happens if I don't sort my waste?

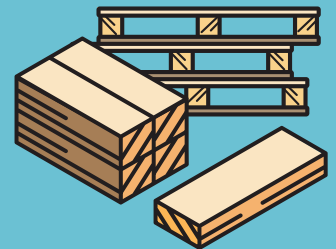
Regular fees and charges apply to unsorted waste loads. This covers the cost for our staff and equipment to extract recyclable materials from mixed waste, plus any disposal costs for materials that can't be salvaged.

## Is the service only offered at no charge to Newcastle households?

Yes. However, non-residents and commercial customers who sort their waste can make use of our source separated fee structure. Please visit [newcastle.nsw.gov.au](http://newcastle.nsw.gov.au) for current pricing.

## What is "Clean Wood"?

Clean wood is **dry, solid timber** that has **not been painted, stained or treated**.



Examples include raw wood packaging cases and crates, untreated pallets, unpainted/unstained fence palings and decking, hardwood and timber offcuts.

All clean wood must be free of plastic and metal strapping, locks, hinges, bolts and corner brackets.

The following are **not classed** as Clean Wood: tree or garden waste (e.g. logs and branches), engineered timber (e.g. plywood/MDF/particle board), laminate (e.g. Laminex), furniture, wood with Copper Chrome Arsenate (CCA) treatment, and Termiticide treated wood (e.g. blue H2 wood or red H3 wood).

## Terms and Conditions

- The Sort & Save service is only available at no charge to residents of the Newcastle LGA (domestic customers only). Proof of residency (e.g. driver licence) is required.
- Residents must sort items prior to arrival to drop off applicable items at no charge.
- Up to 10 items of e-waste is permitted per visit.
- Regular disposal fees apply for unsorted (mixed waste) loads, items not listed in this flyer and for all other customers. Differential pricing is available for source separated loads.
- All customers **must** wear fully enclosed shoes (no sandals or thongs).

# Contact us

## Summerhill Waste Management Centre

Summerhill Road (off Minmi Road), Wallsend

### Operating hours

Weekdays: 7.30am–4.45pm

Weekends and public holidays\*: 9am–2.45pm

\*Closed Good Friday and Christmas Day

[newcastle.nsw.gov.au/sort-and-save](http://newcastle.nsw.gov.au/sort-and-save)



### Office hours

Weekdays: 8.30am–4pm

Weekends and public holidays: Closed

Phone 4974 2000 Email [waste@ncc.nsw.gov.au](mailto:waste@ncc.nsw.gov.au)



**Safety reminder:** It is a condition of entry that customers wear **fully enclosed shoes**. Fully enclosed means covering all of the foot, up to the ankle, with no heel or toe holes (i.e. no sandals or thongs).