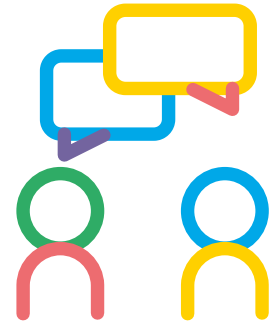


Wallsend Local Centre

Community Survey Snapshot Report 2016



In November 2016, we invited the community to provide input into the Wallsend Local Centre Public Domain Plan (PDP). The PDP was put on Public Exhibition in mid-2017 and was adopted by the elected Council in May 2018 following additional consultation. Renewal works have been broken into a series of stages and will be prioritised for delivery over the next ten years (subject to budget approval).



Stakeholders attended a workshop in November 2016 and provided direction for the development of the Wallsend PDP.

The workshop explored six key themes and unpacked the major elements of the proposed public domain plan. The workshop participants voted on the six themes and their order of priority for improvements was:



- | | | | |
|---|---------------------------|---|-----------------------|
| 1 | Aesthetics | 4 | Drainage |
| 2 | Trees and planting | 5 | Parking |
| 3 | Traffic | 6 | Access and use |

When we asked participants what they like about the Wallsend Local Centre we heard the community value:



- The village feel and historical character
- The business network and the use of social media
- Local community projects e.g. the community planter project
- Local artwork and gardens
- The flow of water from Ironbark Creek
- Wallsend Library
- Wallsend Rotunda
- The former railway goods shed (TPI House).



We also asked participants if there were any issues in the Wallsend Local Centre:

The community had concerns regarding issues with maintenance, graffiti and the aesthetics of the town. Respondents also expressed a desire to improve streetscaping, trees, parking, traffic and pedestrian and cycle connectivity around the town.

The adopted Wallsend PDP proposes improvements which are intended to benefit residents, businesses, property owners and users of the centre.

The project will include:

- Renewal of aging infrastructure, including roads, footpaths, lighting and drainage
- Improved presentation through provision of new good quality infrastructure with integrated trees and landscaping
- Making Cowper Street a 40km/hour High Pedestrian Activity Area between Bulkara Street and Newcastle Road
- Upgrading Cowper Street, including the Kokera Street, Nelson Street and Newcastle Road intersections
- Creating safe and direct connections by providing missing sections of shared path in line with the Newcastle Cycling Strategy and Action Plan 2012
- Providing free WiFi on Nelson Street.



Next Steps

We will come back to the community to talk about the improvements proposed under the Wallsend PDP and to get further community input on:

- developing unifying themes and design character for Wallsend
- the design of future construction stages
- the prioritisation of future construction stages
- opportunities for placemaking, public art and heritage interpretation.