


BUSINESS PACKAGE

WORKING *together*

2022/23

FOR MORE DETAILS

02 4974 1460 // cityhall@ncc.nsw.gov.au // newcastle.nsw.gov.au/city-hall



3	ABOUT THE VENUE
4	VENUE OPTIONS
10	IN-HOUSE CATERING
11	DAY DELEGATE PACKAGES
15	CONDITIONS

WELCOME TO

City Hall

ABOUT THE VENUE

THANK YOU FOR CONSIDERING NEWCASTLE CITY HALL FOR YOUR EVENT

Opened in 1929, this stunning venue is one of Newcastle's most prestigious and unique venues. With its grand architecture, sandstone pillars and marble staircases, Newcastle City Hall definitely makes an impression.

With six accessible function rooms, Newcastle City Hall has played host to a vast array of functions, including civic receptions, community gatherings, weddings, national and international conferences, trade shows and expos, corporate meetings, product launches and social events.

Only 20 minutes from Newcastle Airport with direct flights to most capital cities and near a range of public transport options, Newcastle City Hall has over 2000 accommodation rooms within a leisurely 10 minute stroll. It is also adjacent to the majestic Civic Theatre, offering an additional 1500 seat venue as well as Wheeler Place, a versatile 1200m2 open air space, offering a blank canvas for your next event.

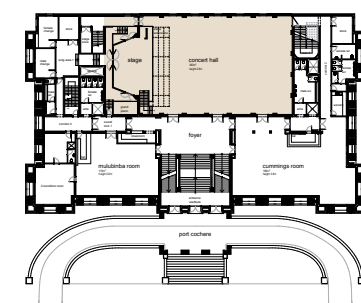
Your event will be in safe and experienced hands with the Newcastle City Hall team. Our high-quality service standards, professionalism and impeccable attention to detail will ensure you and your guests have the ultimate event experience from beginning to end. Should you require any further information or wish to make an appointment to view the venue, please contact our Newcastle City Hall team.



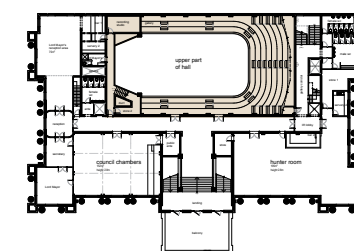
concert hall

The Concert Hall has been acclaimed as one of the finest auditoriums in Australia. It features excellent natural acoustics, air conditioning, superior lighting and comfortable lower and upper gallery seating. The Concert Hall is regularly used for concerts, conferences, balls, gala dinners and exhibitions.

FIRST FLOOR



UPPER FLOOR



AREA
382M²



THEATRE
805



BANQUET
320



CABARET
200



COCKTAIL
500



BOARDROOM
N/A



U-SHAPE
N/A



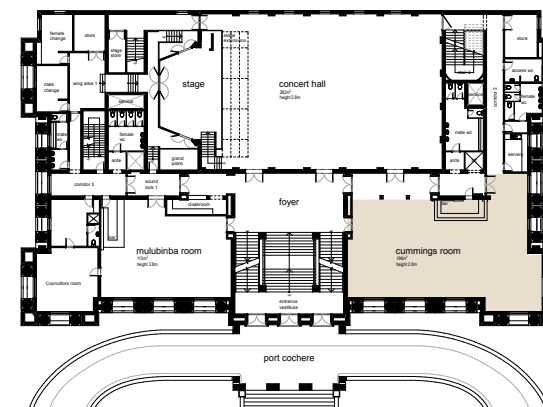
CLASSROOM
120



cummings room

The Cummings Room is situated immediately adjacent to the Concert Hall and has views over the picturesque Civic Park. It has private bar facilities and is ideal for corporate functions, dinners and cocktail parties. The Cummings Room is commonly used as the foyer for the Concert Hall and makes an ideal morning and afternoon tea break area.

FIRST FLOOR



AREA
193M²



THEATRE
150



BANQUET
100



CABARET
72



COCKTAIL
150



BOARDROOM
30



U-SHAPE
40



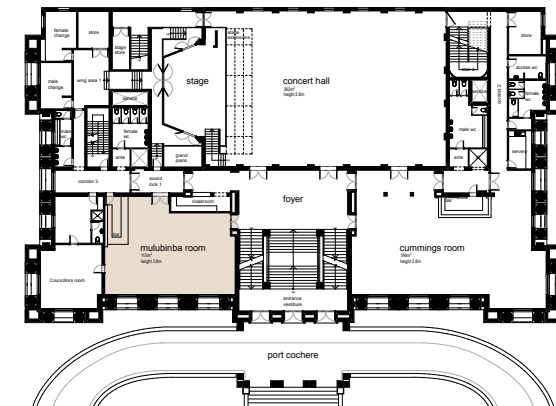
CLASSROOM
75



mulubinba room

Located on the first floor the Mulubinba Room boast authentic art deco atmosphere. This fully carpeted room boasts an abundance of natural light with views across Civic Park and is ideal for meetings, training sessions or as a breakout in conjunction with our larger rooms.

FIRST FLOOR



AREA
114M²



THEATRE
70



BANQUET
50



CABARET
40



COCKTAIL
80



BOARDROOM
25



U-SHAPE
30



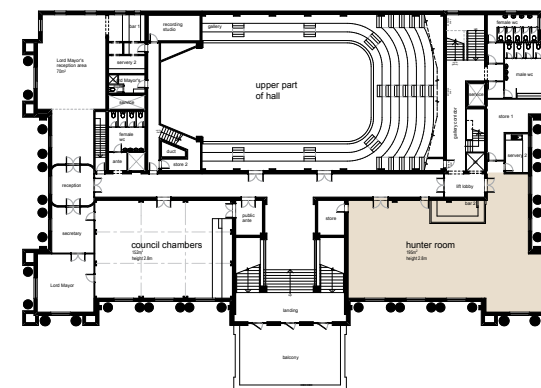
CLASSROOM
27



hunter room

Located on the second floor of Newcastle City Hall, the Hunter Room's elegant high-arched windows frame picture perfect views over Civic Park. It has private bar facilities, amenities, a dance floor, and balcony. With an abundance of natural light, it is ideal for meetings, training sessions, cocktail parties and gala dinners.

UPPER FLOOR



AREA
200M²



THEATRE
150



BANQUET
100



CABARET
72



COCKTAIL
150



BOARDROOM
30



U-SHAPE
40



CLASSROOM
75



banquet room

Located on the ground floor, with polished floors, high ceilings and natural light, the Banquet Room provides you with an opportunity to design a room that reflects your individual tastes and style. With private bar facilities this room is ideal for corporate dinners, trade displays, catering breaks and meetings.

GROUND FLOOR



AREA
365M²



THEATRE
250



BANQUET
200



CABARET
96



COCKTAIL
300



BOARDROOM
N/A



U-SHAPE
N/A



CLASSROOM
75



newcastle room

Located on the ground floor, the versatile Newcastle Room is a perfect space for intimate meetings, workshops or presentations. The Newcastle Room is an ideal breakout space to the nearby Banquet Room.

GROUND FLOOR



AREA
85M²



THEATRE
50



BANQUET
40



CABARET
32



COCKTAIL
50



BOARDROOM
20



U-SHAPE
20



CLASSROOM
27

IN-HOUSE CATERING

local flavour to savour

Newcastle City Hall boasts an in-house catering team with executive chef Mark Rusev working alongside our dedicated Food and Beverage Coordinator and passionate hospitality team to bring you exceptional quality dining and 5-star service in one of our City's iconic and historic venues.

FEED THE
Team



full day delegate package

MINIMUM OF 40 GUESTS

INCLUSIONS

Plenary room hire from 8.00am to 5.00pm

Freshly brewed local coffee and specialty teas on arrival

Morning tea break, freshly brewed local coffee and specialty teas served with two bakery items

Grazing sandwich and salad lunch. A selection of whole fresh fruit. Freshly brewed local coffee and specialty teas. Soft drinks and fresh orange juice from East Coast Juices

Afternoon tea break, freshly brewed local coffee and specialty teas served with one bakery item

Notepads, pens, mints and iced water

Audio visual: WIFI, data projector, screen, whiteboard, flip chart, wired microphone and lectern

	MON-FRI	SATURDAY
	\$	\$
Commercial*	75 _{PP}	88 _{PP}
NFP*	69 _{PP}	77 _{PP}

*Per person per day.



half day delegate package

MINIMUM OF 40 GUESTS

INCLUSIONS

Plenary room hire from 8.00am to 12:00pm or 1:00pm to 5.00pm

Freshly brewed local coffee and specialty teas on arrival

Morning or afternoon tea break, freshly brewed local coffee and specialty teas served with two bakery items

Grazing sandwich and salad lunch. A selection of fresh fruit. Freshly brewed local coffee and specialty teas. Soft drinks and fresh orange juice from East Coast Juices

Notepads, pens, mints and iced water

Audio Visual: WIFI, data projector, screen, whiteboard, flip chart, wired microphone and lectern

	MON-FRI	SATURDAY
	\$	\$
Commercial*	54 _{PP}	63 _{PP}
NFP*	51 _{PP}	57 _{PP}

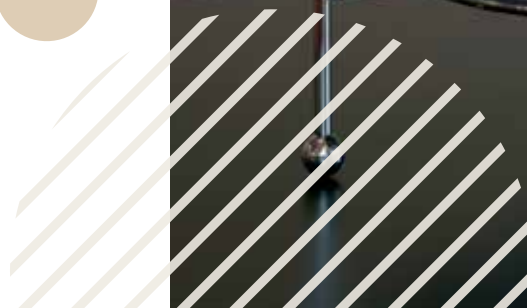
*Per person per day.





morning tea options

MONDAY	Assorted glazed Danish pastries Carrot & pumpkinseed mini cakes GF V
TUESDAY	Buttermilk scones with strawberry jam & cream Zucchini & goats cheese slice GF VEG
WEDNESDAY	Banana & cinnamon tea cakes GF V Baked Uprising sourdough baguette, honey ham & cheese toasties
THURSDAY	Baked Hokkaido style cheese tarts Carrot and pumpkinseed mini cakes GF V
FRIDAY	Assorted handmade muffins Coconut yoghurt, berry & granola cups GF VEG



afternoon tea options

MONDAY	Chef's selection house-made cookies
--------	-------------------------------------

TUESDAY	House-made chocolate brownies
---------	-------------------------------

WEDNESDAY	Assorted glazed donuts
-----------	------------------------

THURDAY	Chef's selection slices
---------	-------------------------

FRIDAY	Assorted macarons
--------	-------------------





CONDITIONS

Pricing is valid for events booked Monday – Saturday. Please contact us for Sunday and Public Holiday pricing. Food and beverage offerings are subject to change according to season and availability. Minimum of 40 guests. Room allocation will be determined by the Newcastle City Hall team based on your guest numbers.





Newcastle
City Hall

FOR MORE DETAILS

p. 02 4974 1460

e. cityhall@ncc.nsw.gov.au

w. newcastle.nsw.gov.au/city-hall