

Newcastle
Libraries

**PDF
Instructions**

Handwritten text in cursive script, possibly reading "Newcastle Libraries".



Newcastle Libraries - Crafternoon Week One

Egyptian Pyramid and Mummy

Requirements

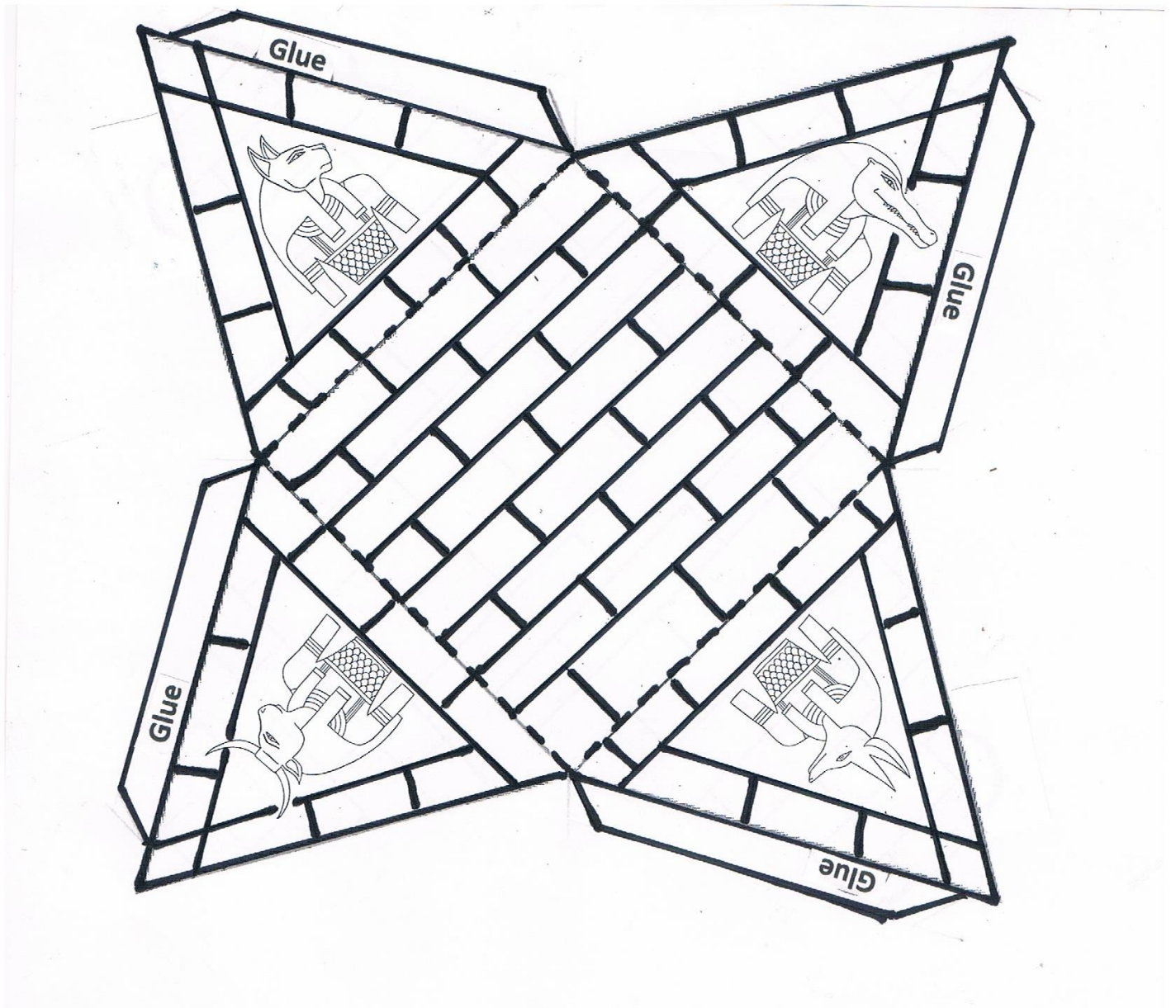
- 1 x A4 sheet of pap or card
- Pencils/textas for colouring
- Glue + Scissors
- Foil
- Optional -Ferraro Rocher wrapper

Instructions

- Print off template sheet
- Colour the pyramid
- Cut out the template
- Fold along the dotted lines and glue together
- Only glue together three sides, if you want the pyramid open the pyramid.
- Shape a small amount of foil into the shape of a mummy
- Wrap the foil mummy in a Ferraro Rocher wrapper if one is available. Keep the mummy in the pyramid, if one side remains open.



Template



Pyramid Facts

- The Pyramids are burial places and monuments to the pharaohs of Egypt
- There are five different construction types of pyramids from the earliest to the latest techniques:
 - Step
 - Meidum
 - Bent
 - Red
 - Great
- There are about 230 pyramids around Egypt
- The largest, known as the "The Great Pyramid of Giza" is the over 146m tall
- The Great Pyramid of Giza points very precisely to the north
- The base of a pyramid is always a perfect square
- There were traps and curses put on the tombs and the pyramids to try and keep thieves away
- Deep inside a pyramid lays the Pharaoh's burial chamber which would be filled with treasure and items for the Pharaoh to use in the afterlife. The walls were often covered with writing "hieroglyphics" and paintings
- Archaeologists think that the step pyramids were built as stairways for the pharaoh to climb to the sun god
- Later pyramids have sloping and flat sides. These pyramids represent a mound that emerged at the beginning of time. The sun god stood on the mound and created the other gods and goddesses
- Ancient Egyptians worshipped over 2000 gods. Ra was the god of the sun.

CAN YOU CRACK THE HIEROGLYPHICS CODE USING THE ALPHABET BELOW?

The key consists of two rows of hieroglyphs and their corresponding letters:

- Row 1: A (bird), B (leg), C (hook), D (hand), E (feather), F (snake), G (jar), H (square), I (diagonal lines), J (curved line), K (basket), L (lion), M (cat)
- Row 2: N (wavy line), O (ear), P (grid), Q (triangle), R (oval), S (hook), T (dome), U (bird), Y (feather), Z (key), SH (rectangle with lines), CH (hook)

The puzzle sequences are:

1. O, C, I, R, I, C, S, R, U, Y, Z, SH, CH
2. H, O, R, U, C, A, U, B, I, C
3. R, A, U, S, H, I, N, G, S
4. A, N, I, S, I, S, M, O, U, N, T