



City of
Newcastle

Lambton Dog Park Survey Snapshot Report

The survey asked about potential areas for a dedicated off-leash dog park in Lambton, including a potential site at Lambton Park and Armstrong Park.



How supportive are you of a new dedicated off-leash space for dogs in the Lambton area?



How supportive are you of a fenced off leash dog area at Armstrong Park?



How supportive are you of a fenced dog off-leash area within Lambton Park?



Top 3 reasons for not wanting to use a fenced off-leash area in Armstrong Park:



"I prefer the Lambton Park option. Not sure of parking situation here."

Top 3 benefits of a fenced off-leash dog area at Lambton Park:

- 25%** Easy access (by walking or vehicle)
- 20%** A great location to exercise a dog
- 17%** It's convenient for me

***36% stated 'No benefits'**

Top 3 benefits of a fenced off-leash dog area at Armstrong Park:

- 24%** Large size of area
- 24%** A great location to exercise a dog
- 20%** Appropriate for the local neighbourhood

***32% stated 'No benefits'**



Top 3 reasons for not wanting to use a fenced off-leash area in Lambton Park:

- 71%** Prefer the space to be used for other recreational uses
- 30%** Concerned there would be too many dogs
- 30%** Not safe for dog to be off leash

"Site plan location sacrifices quality open space area used for informal sport and exercise."

Likelihood to use a fenced off-leash dog area at:

Lambton Park

Armstrong Park

Would use

61%

48%

Would not use

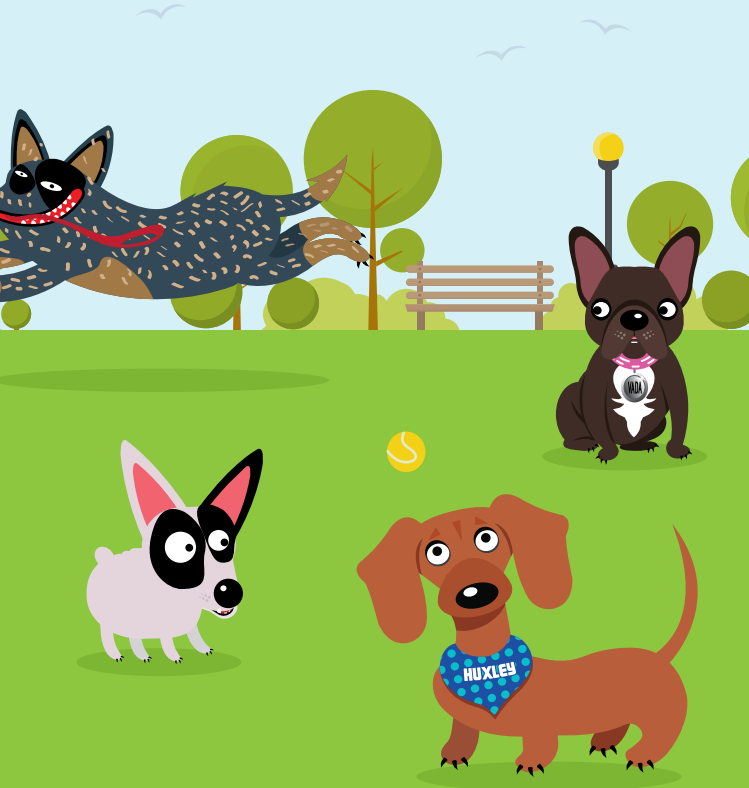
30%

38%

Undecided/don't know

9%

14%



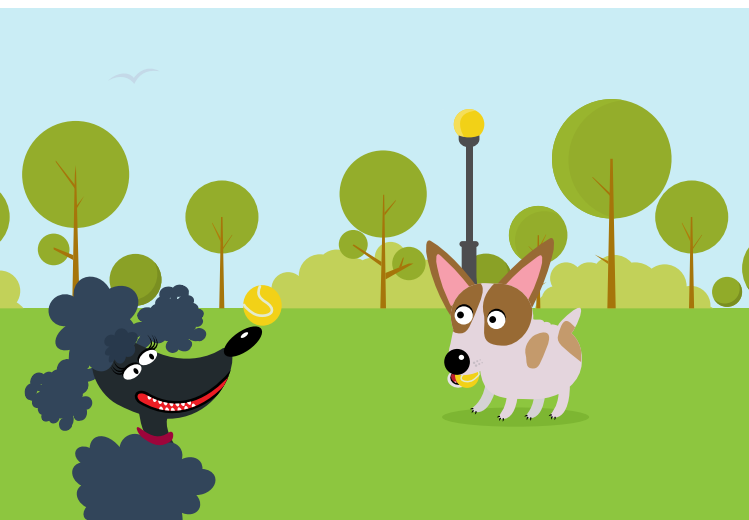
1,178

Total completed surveys

The survey was carried out to better understand how the community feel about the proposed options, capture individual ideas around alternative locations and what features could be included in an off-leash dog area.

City of Newcastle has identified the need for additional fenced dog parks across the city under the City's Dogs in Open Space Plan (DOSPP). Other potential new sites for off-leash areas, including some fenced dog parks across Newcastle are also being explored.

[Read more about the Dogs in Open Spaces Plan.](#)



For enquiries please call 4974 2000
newcastle.nsw.gov.au/YourSay

