

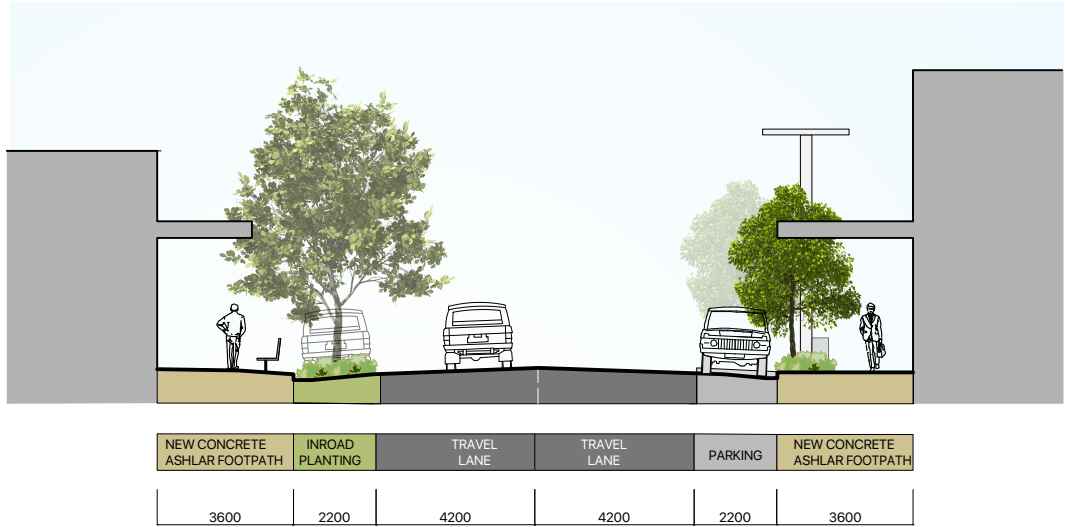
# DETAIL PLAN

## DESIGN PROPOSAL

- ① Kerb extension and kerb ramps to reduce crossing distances and slow traffic speeds.
- ② In-road street tree planting provide shade and maintain low vehicle speeds.
- ③ Footpath widening outside library with seating and table, bike racks and 1 hour timed parking.
- ④ Kerb extension, pedestrian crossing (ongrade) and lighting upgrade.
- ⑤ Relocate pedestrian crossing to improve access and increase on street parking.
- ⑥ Accessible parking space close to Doctor and Senior Citizens Centre.
- ⑦ Explore provision of public toilets as part of any future renewal of Library or Senior Citizens Centre.
- ⑧ Custom fencing to restrict crossing.
- ⑨ Speed cushion to reduce traffic speeds.
- ⑩ Potential occasional street closure for markets and community events.
- ⑪ Investigate the relocation of bus-stop in consultation with Hunter Valley Buses.

## LEGEND

- Proposed Kerb Alignment
- - - Removed Kerb
- No Stopping
- ♿ Accessible car parking
- ☐ Street Furniture including Seats, Bike Rack and Garbage Bins.
- Existing Tree
- Turf
- Mass Planting
- Proposed Small-Medium Tree
- Proposed Large Street Tree
- New concrete ashlar footpath within Core Local Centre.
- New standard concrete footpath outside Local Centre Core.
- ⓑ Bus-stop
- ☐ Food/drink Outlet
- ⓓ Potential outdoor Dining/Retail Space
- Potential paved plaza and seating.



MITCHELL STREET TYPICAL SECTION

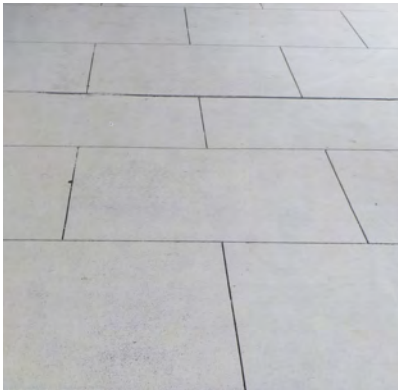




Existing Mitchell Street facing north.



Custom interpretive fencing.



Concrete Ashlar Pavement within Core

### DESIGN PROPOSAL

- ① Parking issues at Ferry terminal to be addressed as a separate project.
  - ② Relocate pedestrian crossing to improve access and increase on street parking.
  - ③ Kerb extension and kerb ramps to reduce crossing distances and slow traffic speeds.
  - ④ Speed cushion to maintain traffic speeds.

- ⑤ New Standard Concrete footpaths.
  - ⑥ Concrete Ashlar Footpath.
  - ⑦ Footpath widening outside library with seating and planting.
  - ⑧ Footpath continuation across laneways to give pedestrians priority.

- ⑨ Potential for carpark improvements by private landowner.
  - ⑩ Potential for footpath widening, seating and landscape improvements by private landowner.
  - ⑪ Potential occasional street closure for markets and community events.
  - ⑫ Investigate the relocation of bus-stop in consultation with Hunter Valley Buses.

CARPARKING NUMBERS	
ADDITIONAL PARKING SPACES	2
LOST PARKING SPACES	2
NET	0

Note: The new kerb extensions at intersections shortens available parking spaces. Only entire spaces are denoted in the table.

### LEGEND

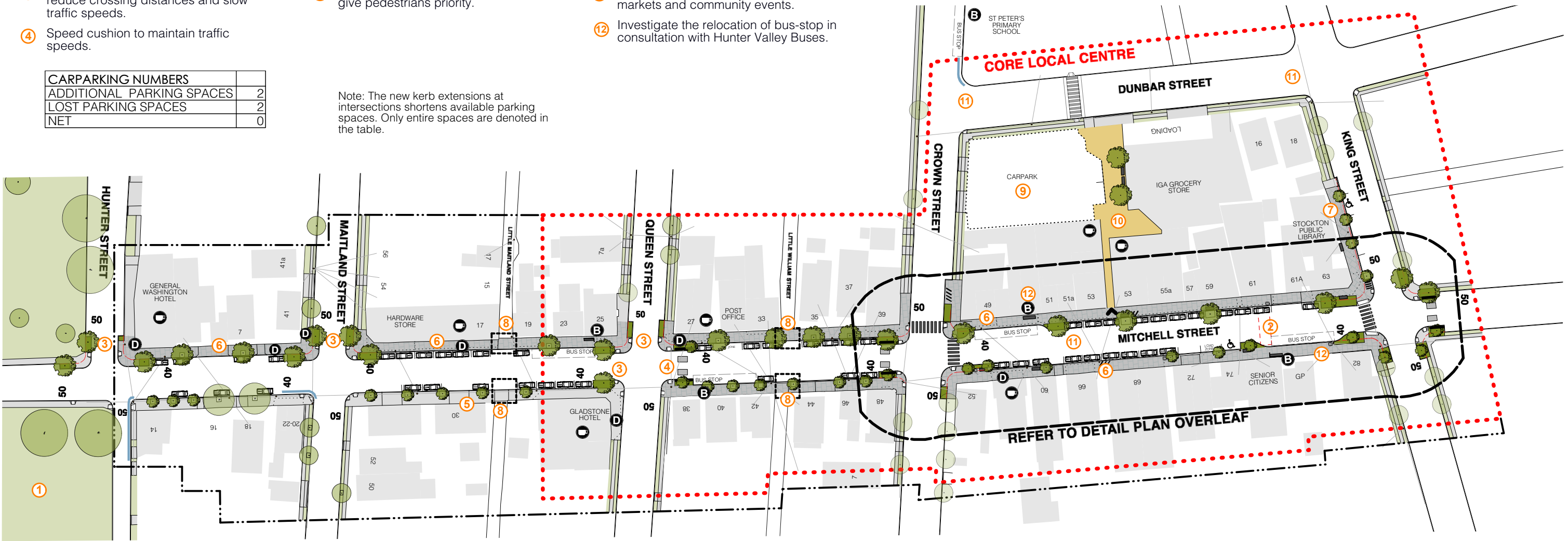
- Study Area
  - Core Local Centre
  - Proposed kerb alignment
  - Removed kerb
  - Potential paved plaza

- Existing Tree
  - Turf
  - Mass planting
  - Proposed Small-Medium Tree
  - Proposed Large Tree

- Pedestrian crossing (on grade)
  - Kerb ramps
  - Speed Cushion To slow traffic speed
  - New concrete ashlar footpath within Core Local Centre.
  - New standard concrete footpath outside Local Centre Core.
  - Accessible Carparking

- Street Furniture including Seats, Bike Rack and Garbage Bins.
  - Custom interpretive Fence. To prevent crossing at threshold.
  - No Stopping
  - Bus Stop
  - Food/Drink Outlet
  - Outdoor Dining/Retail Space

- NOTES:**
- A 40km zone with associated traffic calming devices is proposed for the Local Centre. All existing car parking arrangements are retained unless shown on the plan.
  - The location of street furniture including seating, bins and lights will be considered at the detail design stage.
  - This is a concept plan for the communication of proposals - not a detailed civil design. In some instances the final layout may vary to accommodate underground infrastructure and technical requirements.



OVERALL PLAN

# Stockton Public Domain Plan and Traffic Plan

2nd February 2017



The City of  
**Newcastle**

PO Box 489 Hunter Region Mail Centre Newcastle 2300